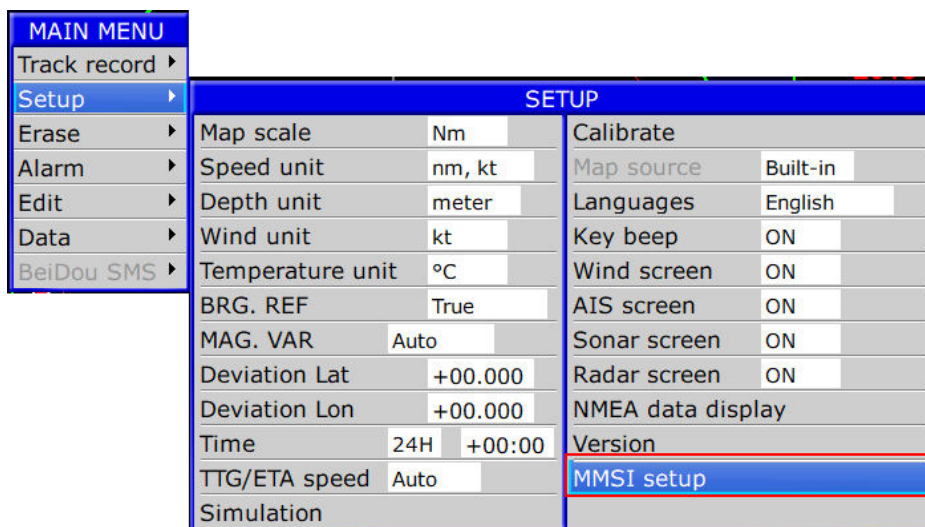
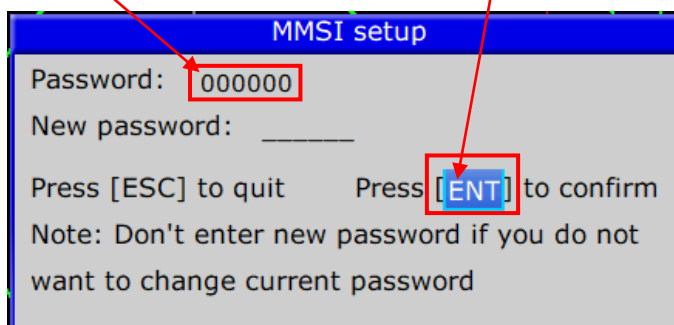


How to programming AIS data (own vessel information) for Onwa AIS plotter

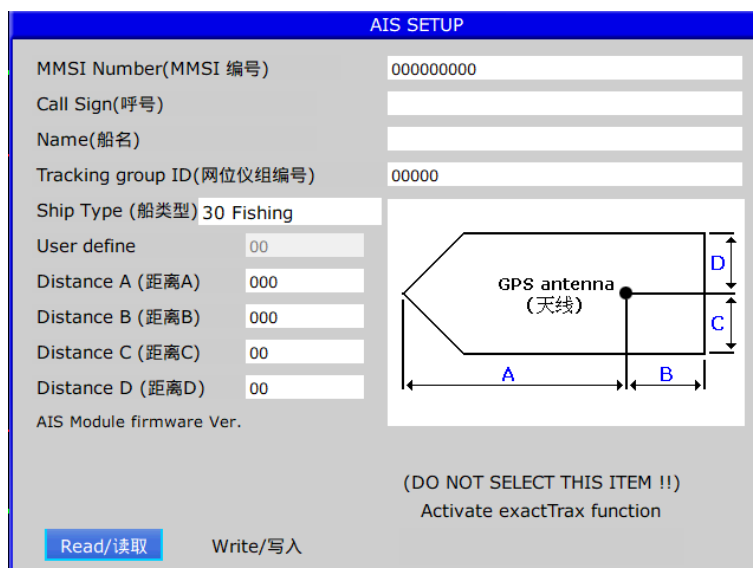
1) Select MMSI setup in MAIN MENU-> SETUP -> MMSI setup as shown below :



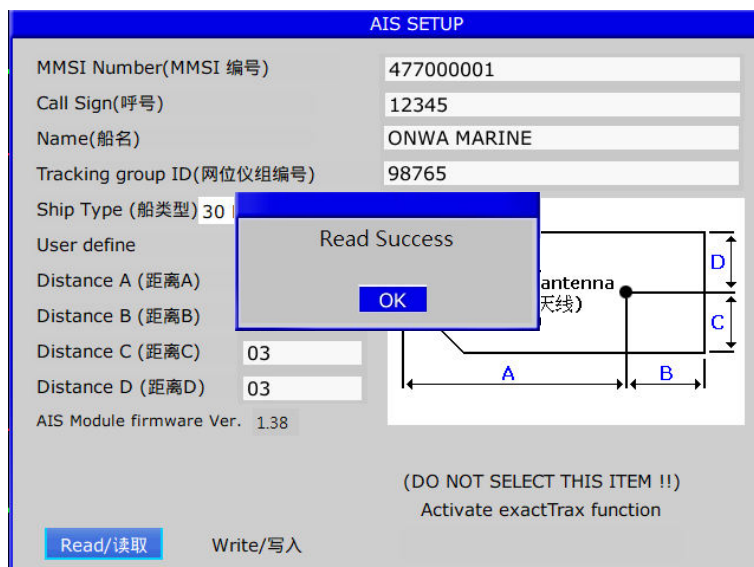
2) Enter password (default is "000000") and scroll the cursor to [ENT] as shown then press [ENT] key to confirm :



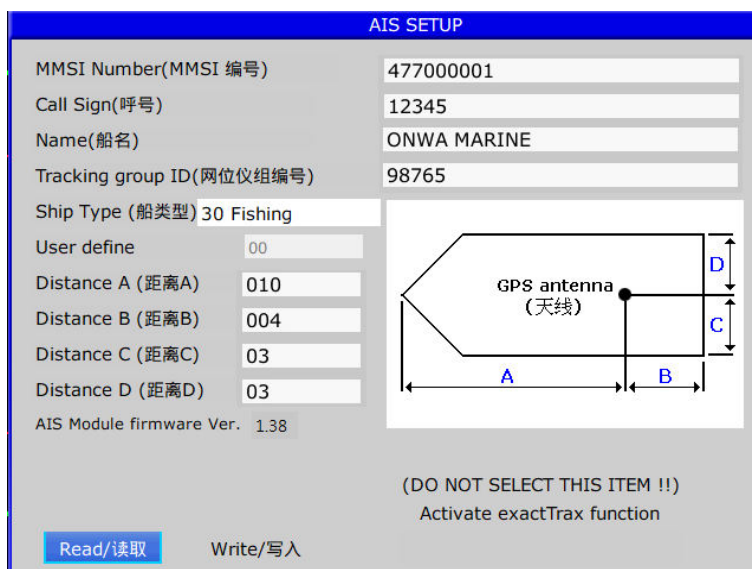
3) The below AIS SETUP window will pop up as shown :



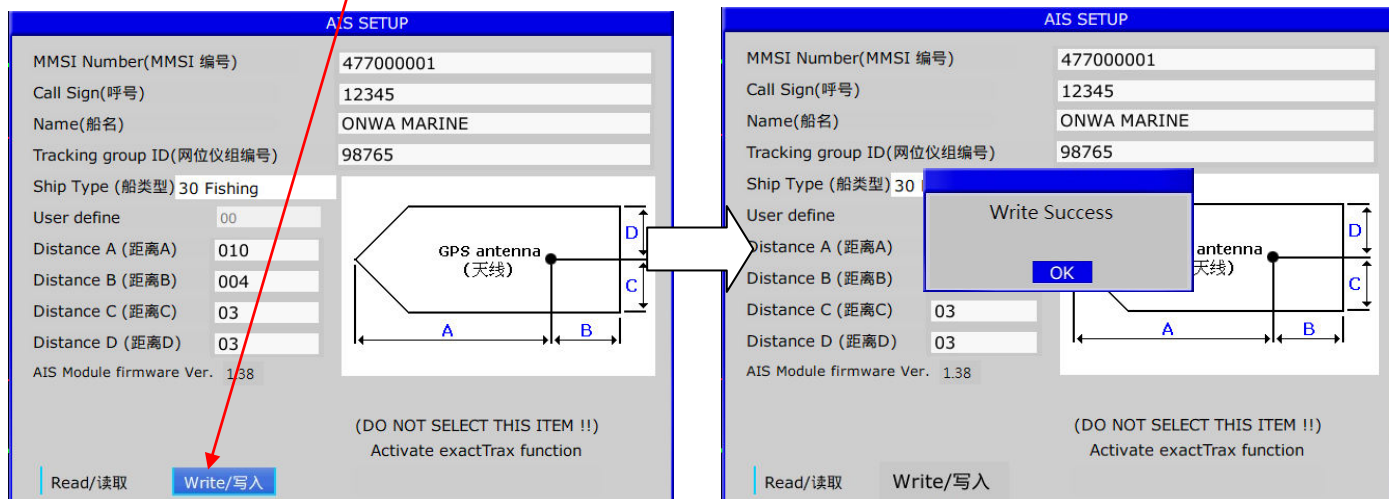
- 4) Scroll the cursor to [Read] and press [ENT] key to read the stored information (Call Sign, Name and AIS Module firmware ver.) from the preset memory.



- 5) Change the information by combination of [arrow keys] and [ENT] according to actual data of your boat, MMSI, boat's name, Ship type, boat size etc.



- 5) Scroll the cursor to [Write] after you finish editing and press [ENT] key to save the changes.

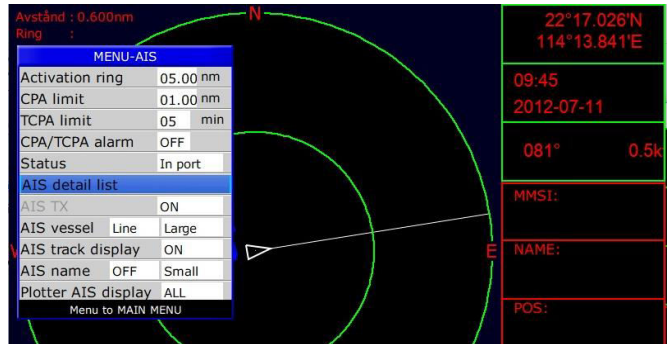
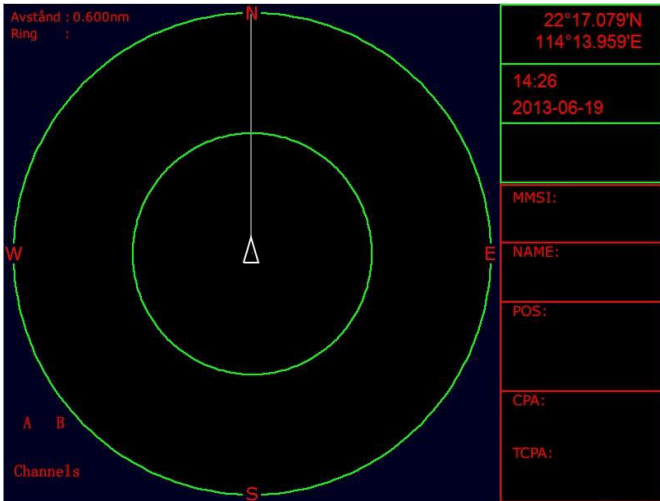


Note :

Don't care the Tracking group ID if you are not necessary to use the plotter with ONWA AIS tracking buoy.

6) Now you can press [ESC] key to exist the AIS setup. You can check the saved AIS setup information by the following steps :

6.1) Select AIS screen and press [Menu] -> AIS detail list



6.2) Select "000" from the list and press [ENT] to check the saved AIS setup information

AIS SHIP LIST							Received targets: 92
No.	NATION	MMSI	NAME	DIST	COG	TYP	
000		009103635	ONWA1635	0.0	62.2	B	
001		050000002	HOSN WANG WEI YI	21.8	0.0	NET	
002		009102242		0.1	***	B	
003		009010623		0.1	0.0	B	
004		009103057		0.1	0.0	B	
005		009010120	ONWA10120	0.1	0.0	B	
006		009102217		0.1	***	B	
007		009010166		0.2	0.0	B	
008		009010193		0.2	0.0	B	
009		009102360		0.2	0.0	B	
010	CHINA	413902904	YUE GUANGHAI HUO8318	0.8	343.7	B	
011	CHINA	413900468		0.9	280.1	B	
012	KIRIBATI	529402000		1.0	121.4	A	
013	HONG KONG	004773771		1.0	***	S	
014	HONG KONG	000000083		1.3	0.0	A	
015	HONG KONG	477995063		1.5	256.9	A	
016	HONG KONG	477995062	MAN LOK	1.6	0.0	A	
017	HONG KONG	477995066		1.8	10.5	A	

AIS SHIP LIST							Received targets: 101
No.	NATION	MMSI	NAME	DIST	COG	TYP	
000							
001			ONWA1635				B
002	CH		COUNTRY				B
003			SHIP-TYPE	Pleasure Craft			B
004			MMSI	009103635			B
005			CALL SIGN	100200			B
006							B
007			POS	22°17.040'N			B
008				114°13.875'E			B
009			COG	63.2			B
010			SOG	3.4			B
011	CH		CPA	***			B
012	CH		TCPA	***			B
013	KIR		RNG	0.0			A
014	HO		BRG	245.5			S
015							A
016	HONG KONG	477995062	MAN LOK	1.6	0.0		A
017	HONG KONG	477995063		1.6	251.9		A

Note :

A) Enter "Tracking group ID" if necessary to use with Onwa AIS buoy with programmed to send "Onwa protocol".

Please notice that the "Tracking group ID" must be same as the "Tracking group ID" programmed in Onwa AIS buoys otherwise the AIS buoys could not be displayed on your AIS plotter.